

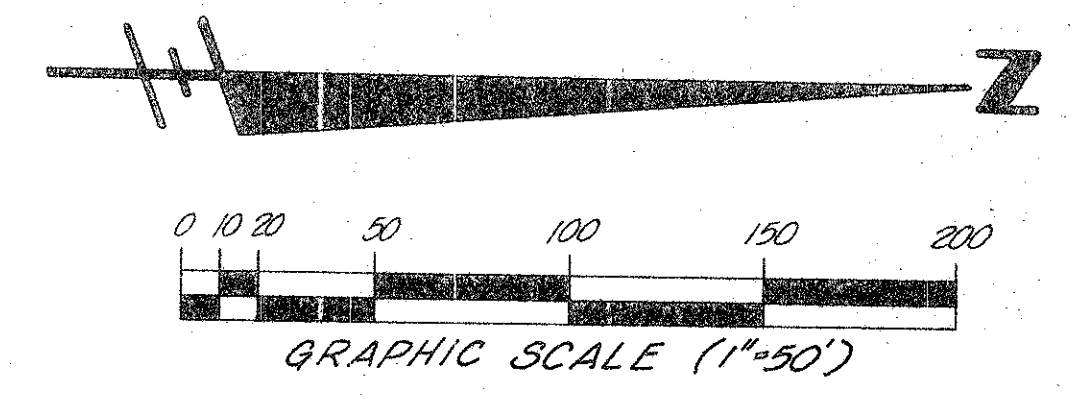
44/25

THIS INSTRUMENT PREPARED UNDER THE DIRECTION OF JOHN H. FITSCHEN  
CRAVEN THOMPSON & ASSOCIATES, INC.  
LAND SURVEYORS - CIVIL ENGINEERS  
3974 OKEECHOBEE BOULEVARD,  
WEST PALM BEACH, FLORIDA

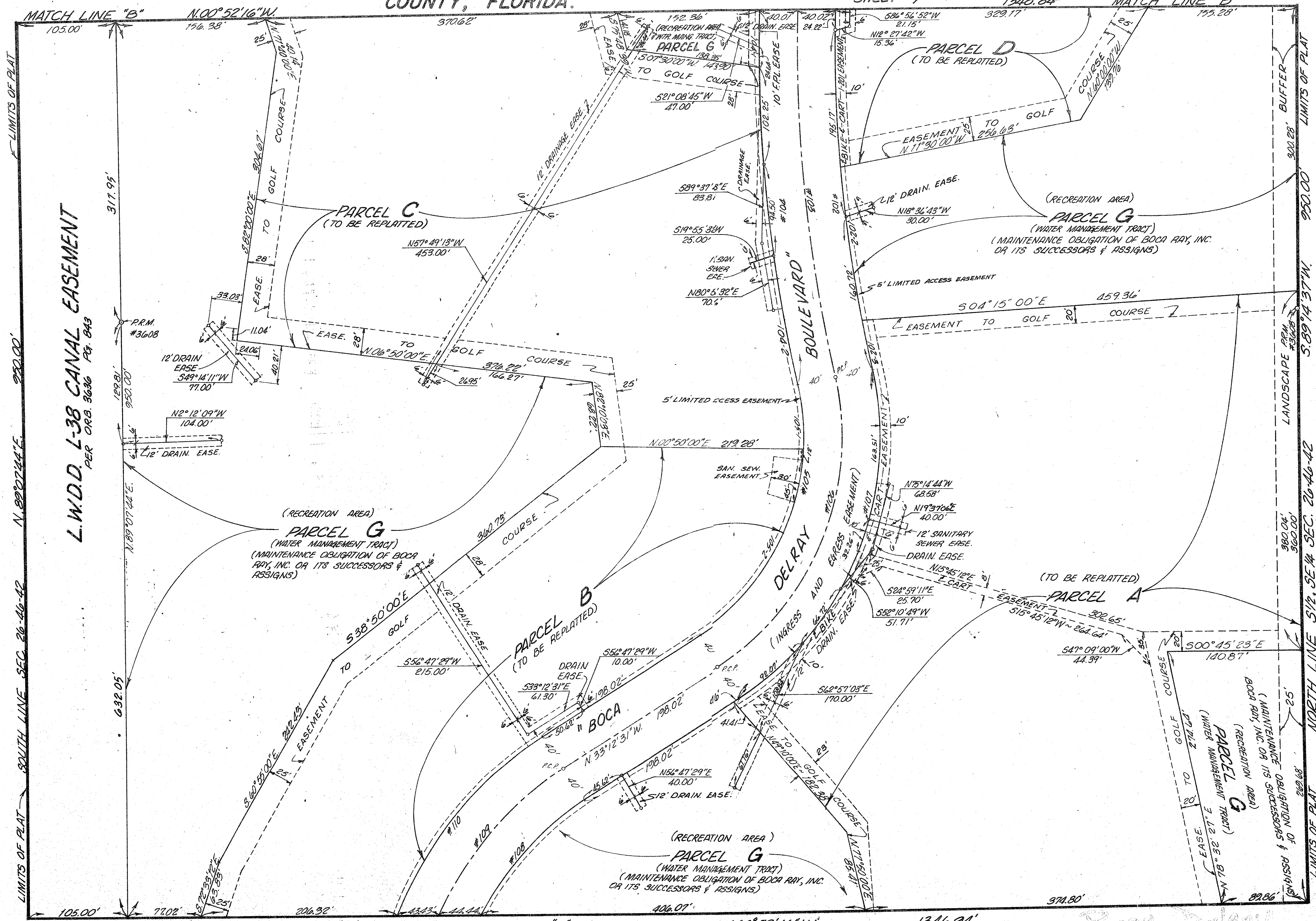
# BOCA DELRAY

A P.U.D.

A PORTION OF SECTION 26, TOWNSHIP 46  
SOUTH, RANGE 42 EAST, PALM BEACH  
COUNTY, FLORIDA.

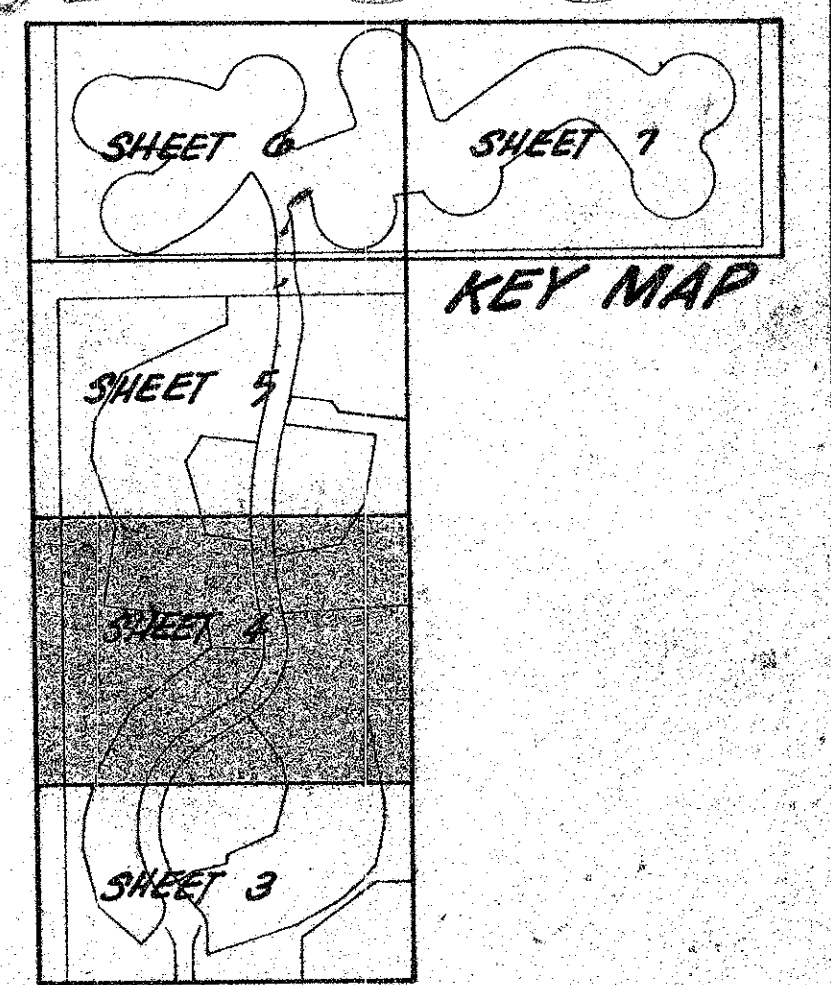


25



ACREAGE (NOT PLATTED)

No Impact Fee  
per Boca Delray Ord. 9-9-82  
Art. 81-151  
P.S. - P.U.D.  
0206-000



LIMITS OF PLAT SOUTH LINE SEC. 26-46-42 N. 89° 07' 44" E. 950.00' L.W.D.D. L-38 CANAL EASEMENT PER OR. 9636 Pg. 843

LIMITS OF PLAT NORTH LINE 5 1/2, SE 1/4 SEC. 26-46-42 5.89° 14' 37" W. 950.00'

MATCH LINE "A" N. 00° 52' 16" W. 1346.94' MATCH LINE "B" 1348.84'

SHEET 3

SHEET 4 OF 7 SHEETS